

SAIF MALL & RESIDENCY

SHOPPING MALL

Saif Mall & Residency presents the well-equipped and vogue design of the shopping mall under a single roof where many renowned outlets have booked their slots to bring every western element to their spaces, which includes Food Courts, Finest Fashion Stores, Global Brands, Luxury boutiques and all kinds of designer and lifestyle goods under one roof.

KIDS AREA & GYMNASIUM

Saif Mall & Residency takes care of the children and their joyful lives by providing much needed toys and play area where they can play after hectic day in School. They can be entertained while you can shop and have your own gala time meandering inside the mall.

FOOD COURT & MASJID

Saif Mall & Residency provides the integral and wide space for Muslims to pray while doing their business or staying in apartment to keep their inner peace high. Further, Saif Mall & Residency provides a number of restaurant spaces comprise of a variety of eaters including high end restaurants, Fast Food chains and distinctive local "desi" food.



3% DOWN PAYMENT

3 YEARS INSTALLMENT PLAN



Earthquake Proof Structure



Emergency Exits



Security System



Food Court



CCTV Cameras



High-speed Lifts on different locations



Central Air-conditioned



Masjid



Escalators



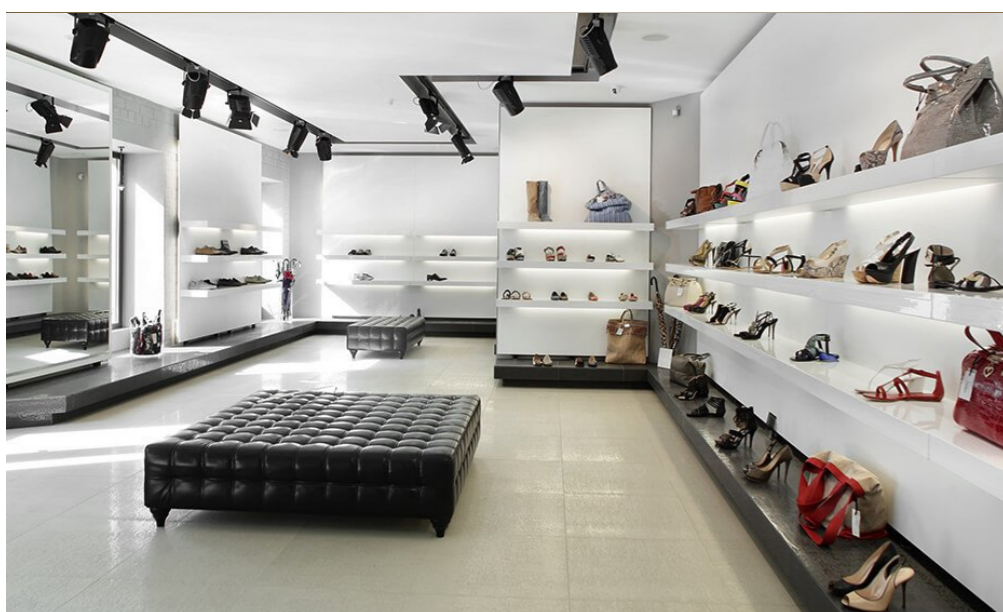
Capsule Lift



Fire Fighting system



Play Land & Entertainment Halls



SAIF MALL & RESIDENCY

PESHAWAR



A Project of:
SAIF ASSOCIATES (PVT).LTD



Head office: Town Residency, Old Bara Road, University Town, Peshawar
Site Office: Adjacent to UPS opposite to Peshawar board University road, Peshawar
Head office: 091-5744480-81 | Site Office: 091-5844483 | 0301-1011440

ABOUT PROJECT

The first of its kind-state of the art building equipped with modern facilities and luxurious residential and commercial building located at Main University Road, Opposite BISE Board, Peshawar. Saif Mall is world class project that meticulously blends all the necessities, luxurious and standardized facilities for a super luxury lifestyle. Security and unequalled excellence, every apartment is an archetype of wonderful comfort.



KEY FEATURES

- Just off Main University Road.
- School, Colleges, Universities, Hospitals at walking distance.
- 3 Floor Basement Car Parking
- High Speed Elevators
- Every Apartment is wide & Air Efficient.
- Fire Fighting System
- 24 hrs Electricity Backup



AMENITIES

Efficient Kitchen

The kitchen has every need of the household needs with beautiful shelves, ventilation space and wide space area for multi-purposes.

Private Outdoor Space

The spacious apartment provides accessible spaces where you can stroll around freely without being disturbed.

Cutting-edge Technologies

Smart light and sound, energy-efficiency, smart bathroom utilities, climate control are a few examples.

Wide area Rooms

To do justice to their market value, luxury apartments pack in top wide areas, and further enhance it with the aesthetics on

Rooftop of the Building

The rooftop space is accommodated of private parties and is equipped with outdoor cooking equipment and a bar area.

Ceiling Height

The floor-to-ceiling height in luxury apartments are ideally 12 feet .

Garbage Chute

The apartments are designed with garbage chutes to excrete the garbage system efficiently.

Tiles

The apartments and shops are designed with ceramic tiles. It is an unglazed, red-toned stone with porous surfaces.

Elevators

The western designed elevators provide easy access to rooms and shops with 24-7 maintenance.

Secure Entry

The security method of building is quite secure with biometric devices authorization and secure guards. Who ensures every layer of entrance.

Prime Location

Security and nearness to popular social infrastructure make such regions highly preferred among investors.

Room Service

The neat & clean service enables the dwellers to use the service every time they need.

Cost of Living Downtown

Apartment buildings in downtown center city districts charge a premium per square feet of living space as compared to other locations.

Covered parking

The tripple basements of car parking area enables the residents to freely move and park their vehicles.

LOCATION

Ideally located at Main University road opposite BISE Board Peshawar, most sought location, the Saif Mall luxury apartments and commercial building is surrounded with replete number of business and necessities of life. Easy commute and transport facility has covered the wide area for easy access to the commercial Broadway.

